

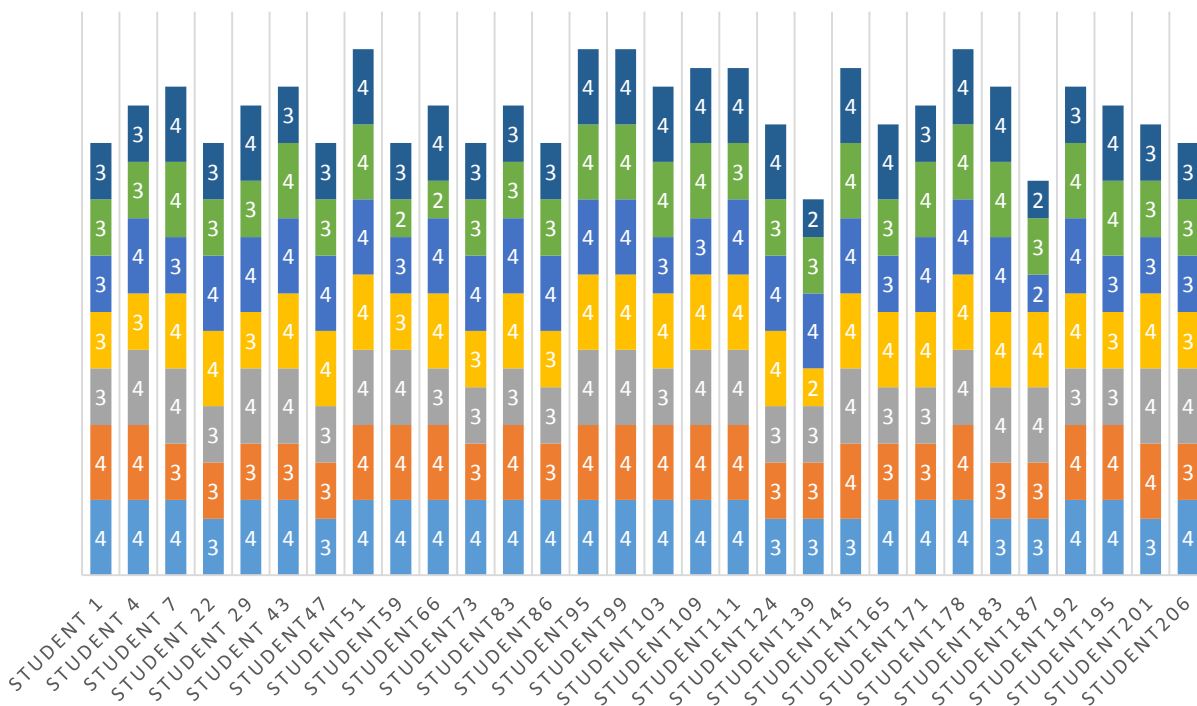


ARTS AND SCIENCE COLLEGE, PULGAON

FEEDBACK ANALYSIS 2017-18

STUDENTS FEEDBACK ON PROGRAMME/COURSE

- 7. Extent of effort required by students
- 6. Relevance of additional source material (Library/Laboratory/ICT)
- 5. Clarity and relevance of textual reading material
- 4. Learning value (in terms of knowledge, concepts, manual skills, analytical abilities and broadening perspectives)
- 3. Applicability/relevance to real life situations
- 2. Extent of coverage of course
- 1. Depth of the course content including project work if any



4. VERY GOOD

3. GOOD

2. SATISFACTORY

1. UNSATISFACTORY

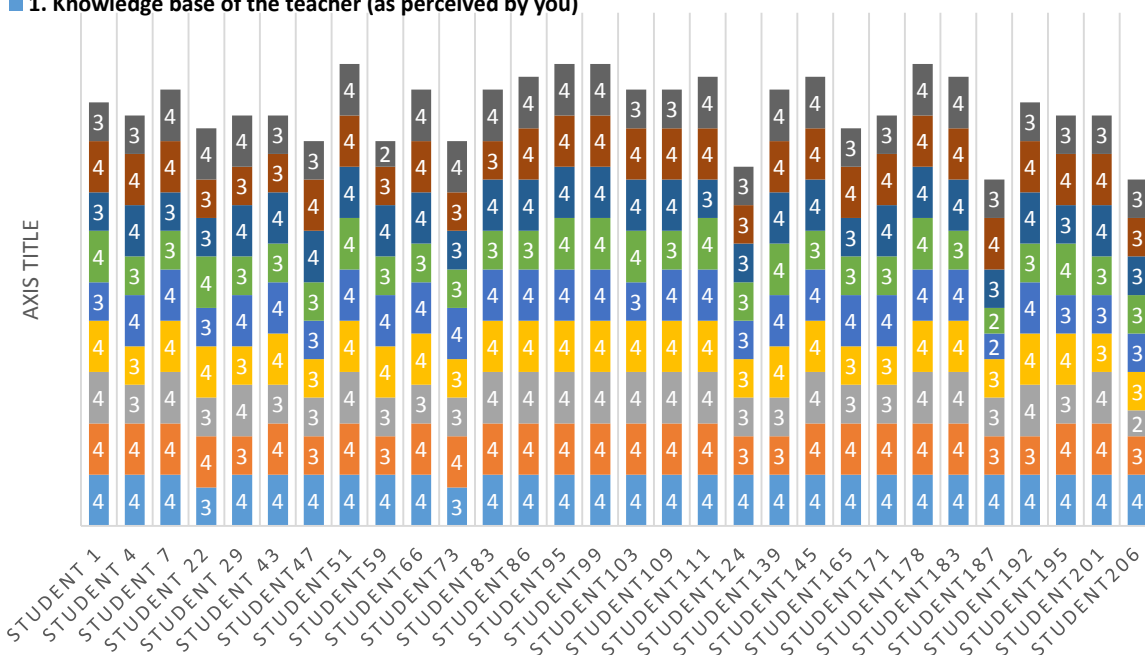


ARTS AND SCIENCE COLLEGE, PULGAON

FEEDBACK ANALYSIS 2017-18

STUDENTS FEEDBACK ON TEACHER

- 9. Provision of sufficient time for feedback
- 8. Ability to design quizzes/ Tests/ assignments/ examinations and projects to evaluate students understanding of the course
- 7. Accessibility of the teacher in and out of the class (includes availability of the teacher to motivate further study and discussion outside class)
- 6. Ability to integrate content with+C26:C27 other courses
- 5. Ability to integrate course material with environment/other issues, to provide a broader perspective
- 4. Interest generated by the teacher
- 3. Sincerity/Commitment of the teacher
- 2. Communication Skills (in terms of articulation and comprehensibility)
- 1. Knowledge base of the teacher (as perceived by you)



4. VERY GOOD

3. GOOD

2. SATISFACTORY

1. UNSATISFACTORY

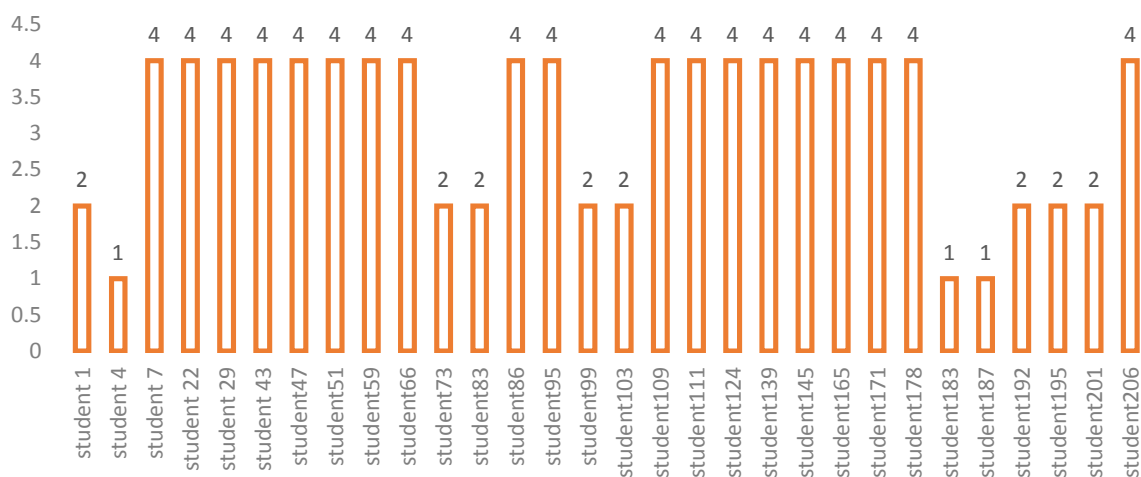


ARTS AND SCIENCE COLLEGE, PULGAON

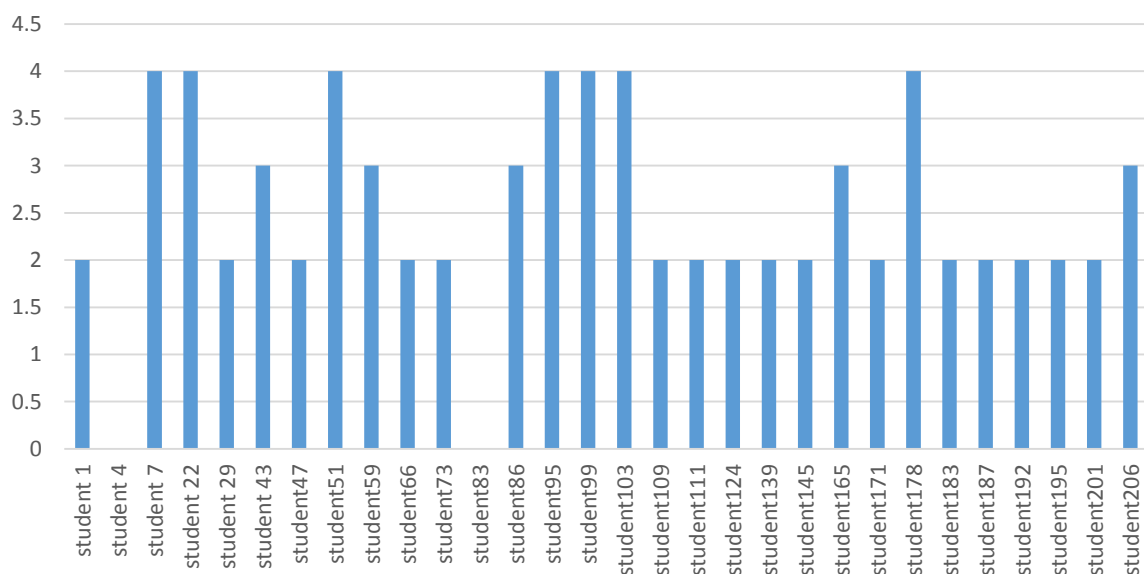
FEEDBACK ANALYSIS 2017-18

STUDENTS' OVERALL EVALUATION OF THE PROGRAMME AND TEACHING

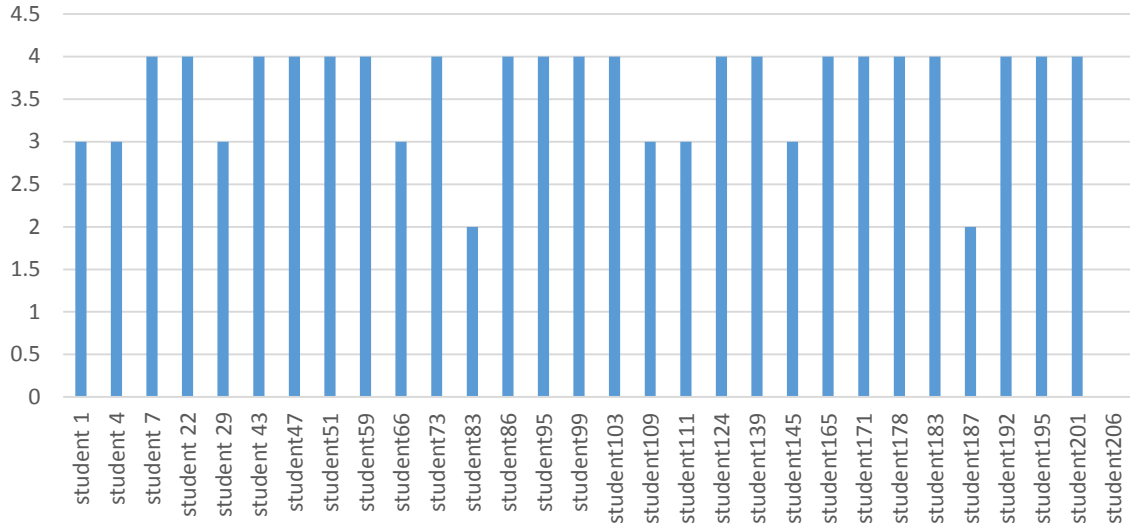
1. The syllabus of each course was



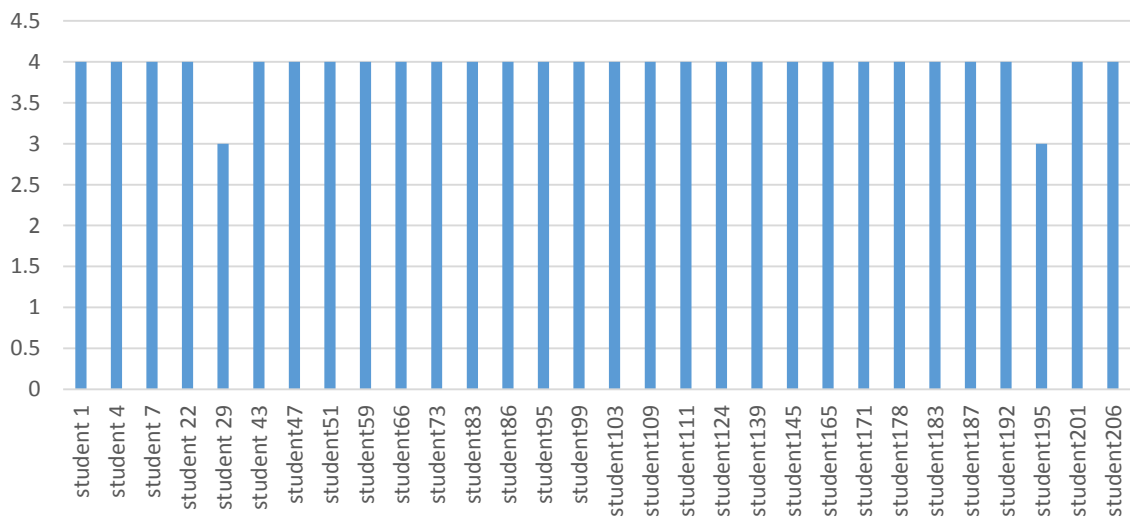
2. Was the course easy or difficult to understand?



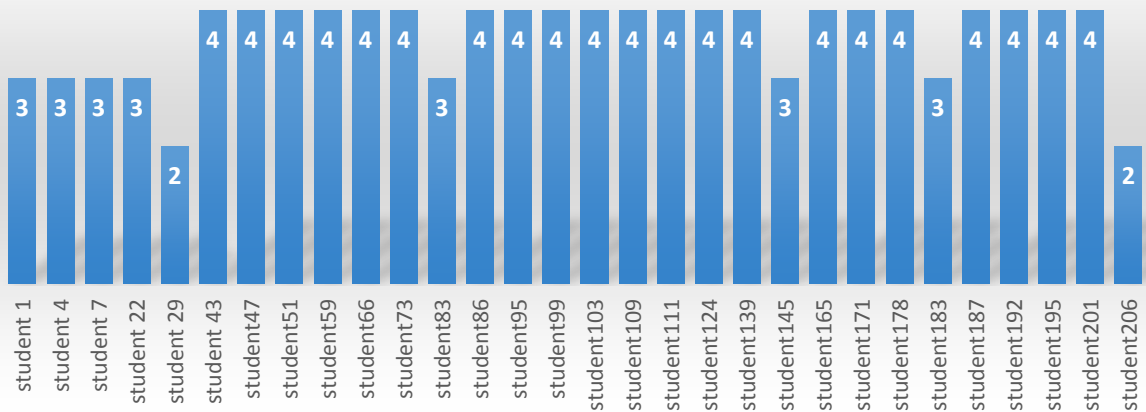
3. How much of the syllabus was covered in the class?



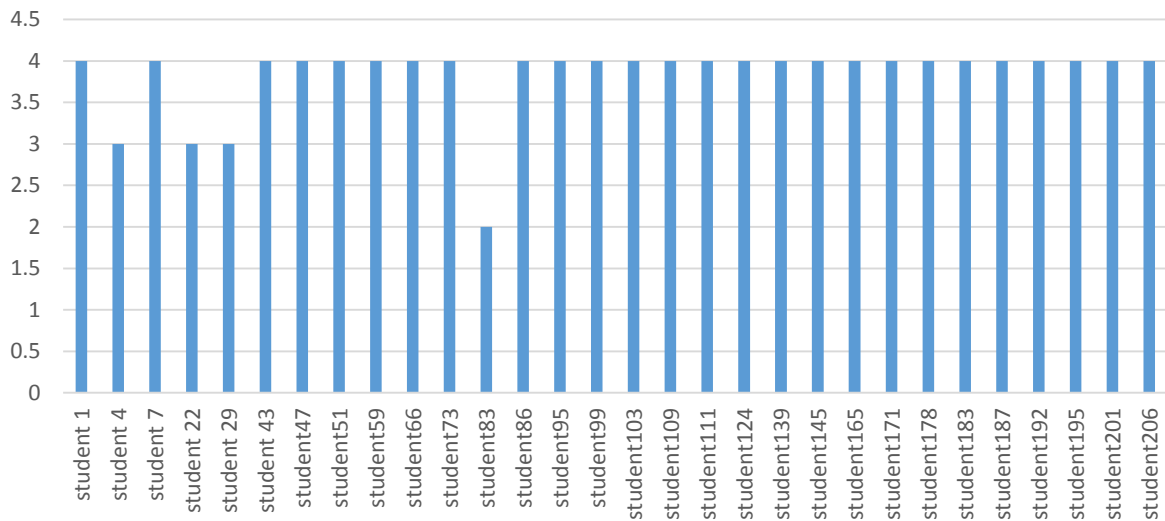
4. How well did the teacher prepare for the classes?



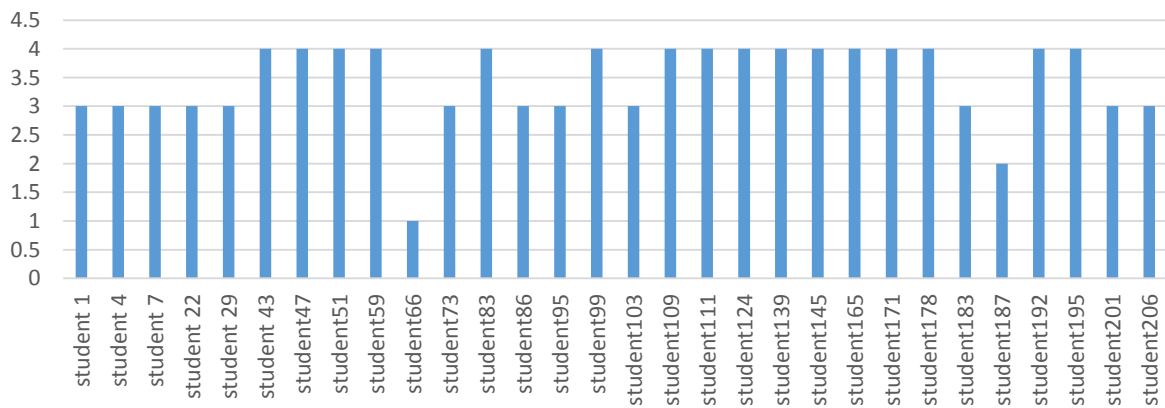
5. The teacher's approach can best be described as



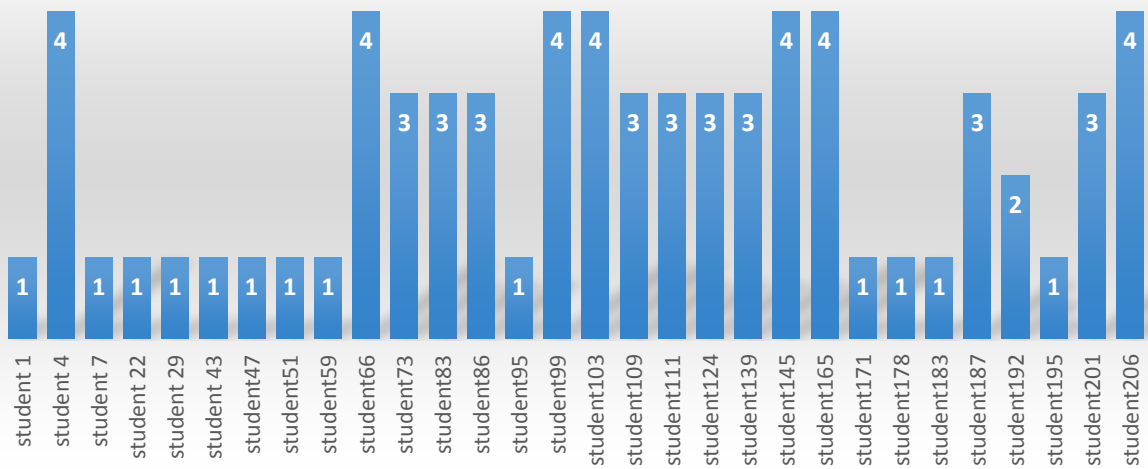
6. How well was the teacher able to communicate?



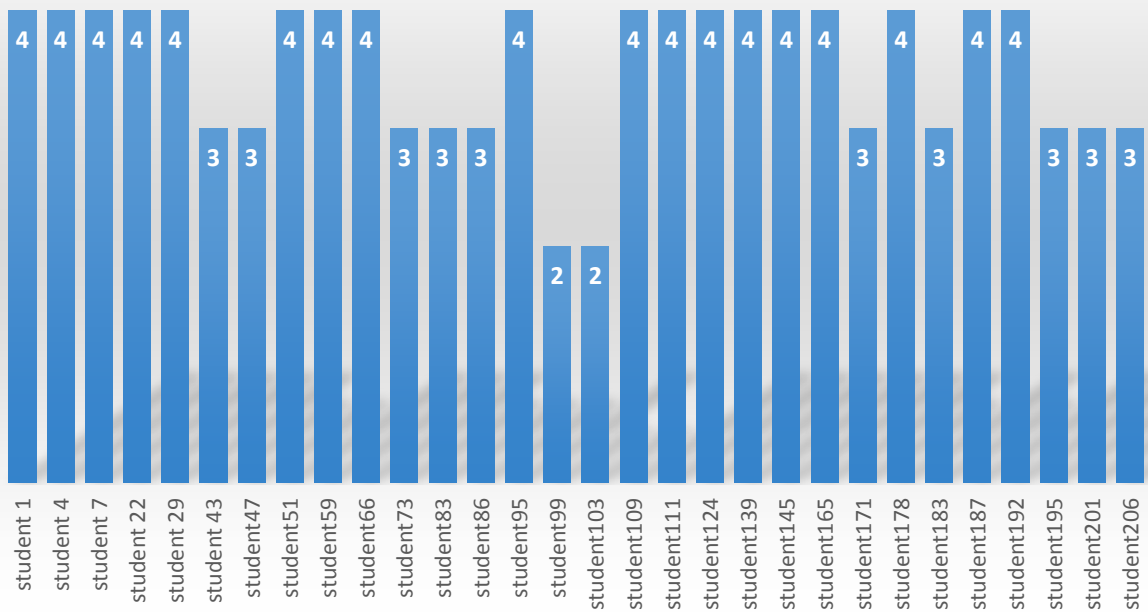
7. How far the teacher encourages student participation in class?



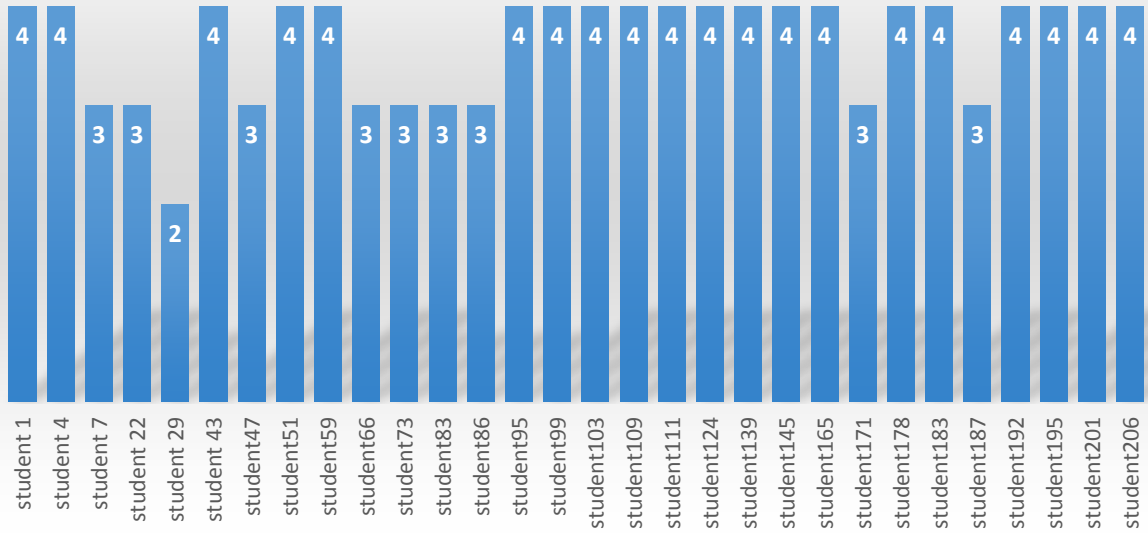
8. If yes, which of the following methods were used?



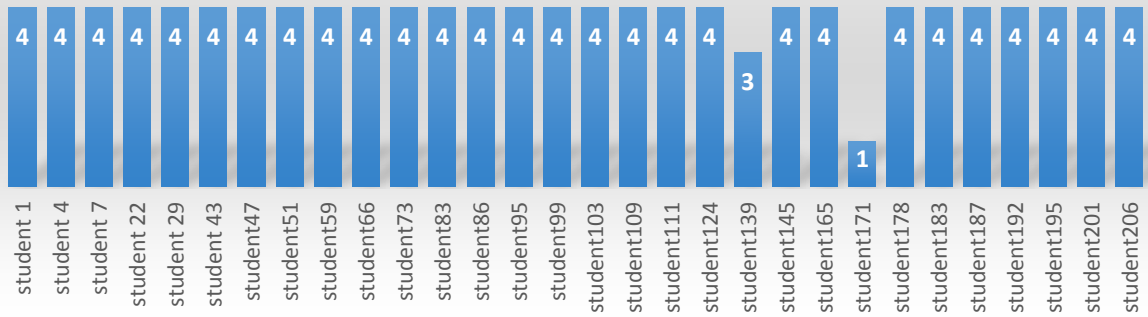
9. Teachers inform you about your expected competencies, course outcomes and programme outcomes.



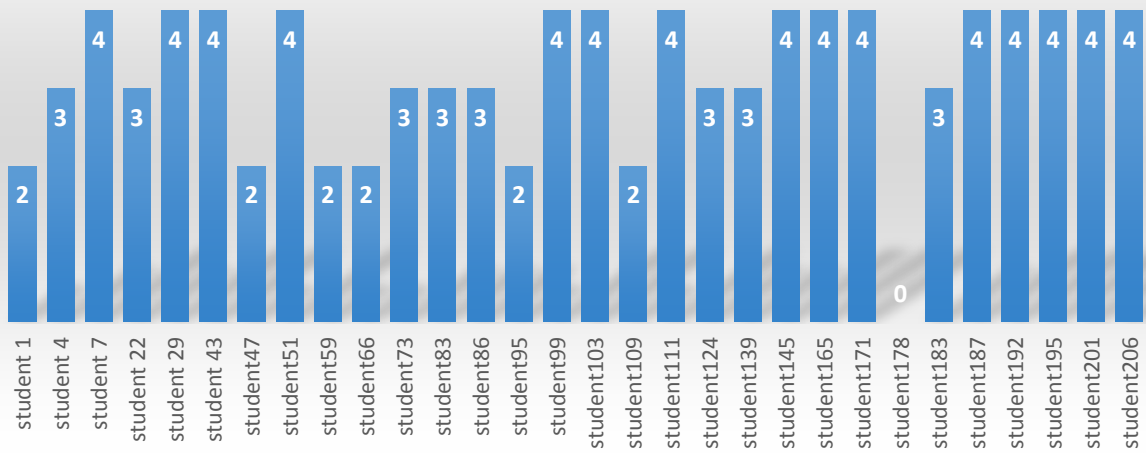
10. The teachers illustrate the concepts through examples and applications.



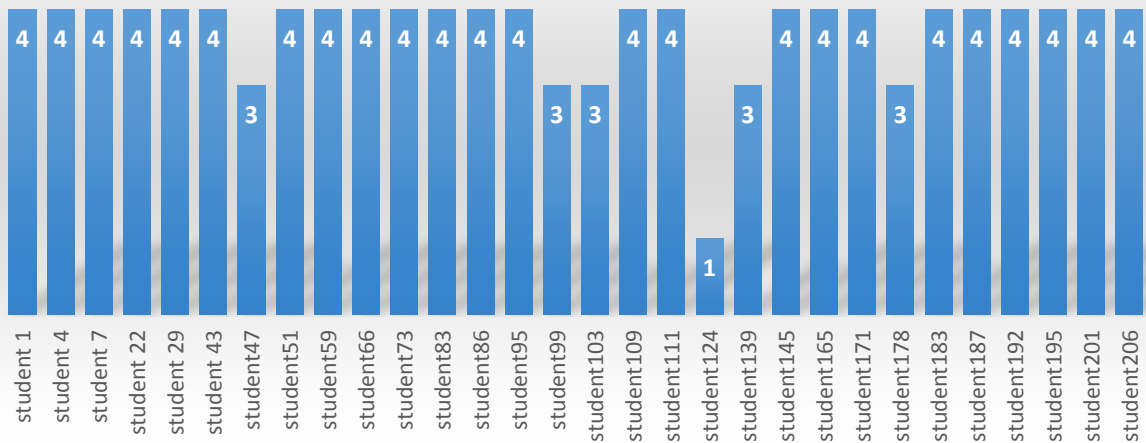
11. Fairness of the internal evaluation process by the teachers



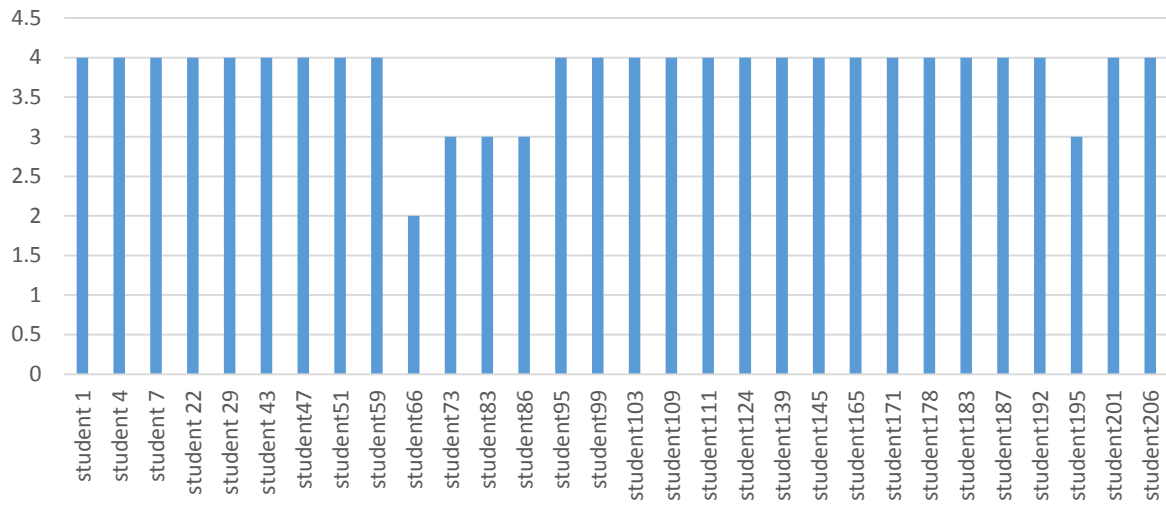
12. Your mentor does a necessary follow-up with an assigned task to you.



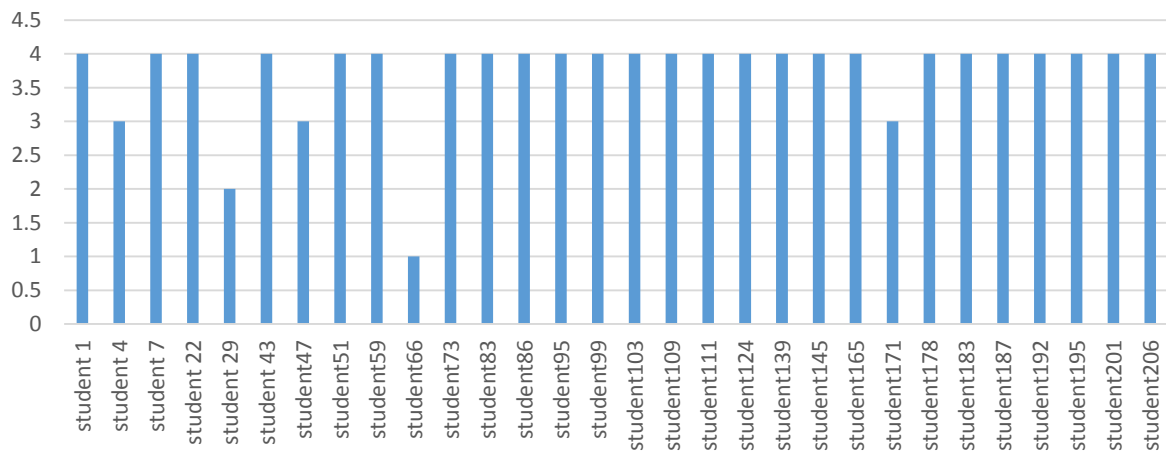
13. How often did the teacher provide feedback on your performance?



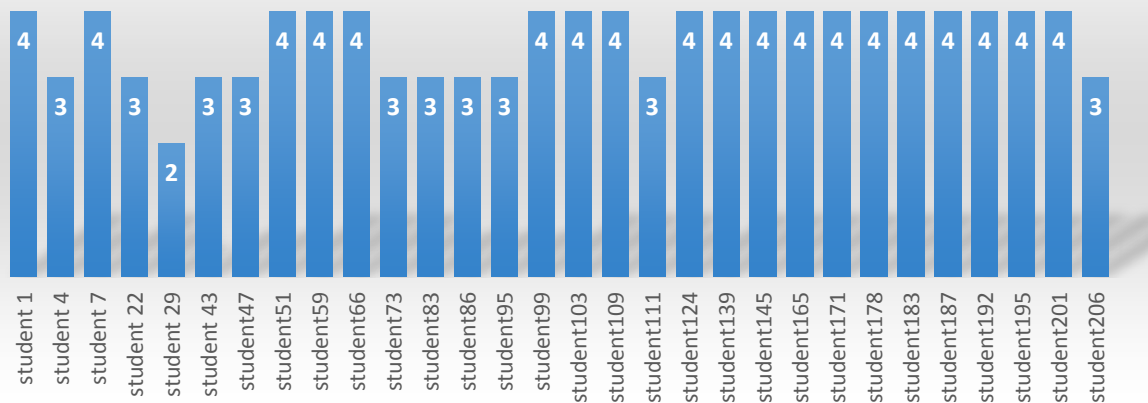
14. Was your assignments discussed with you?



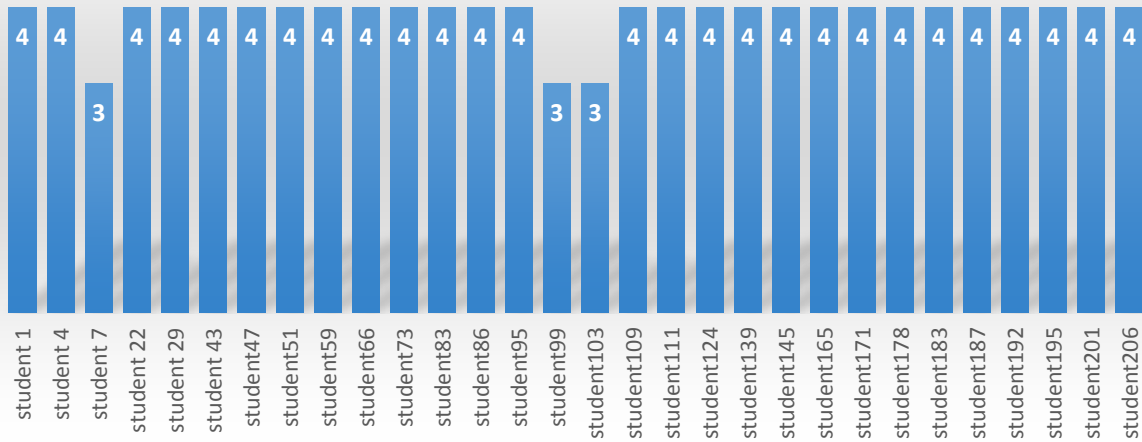
15. The teachers identify your strengths and encourage you with providing right level of



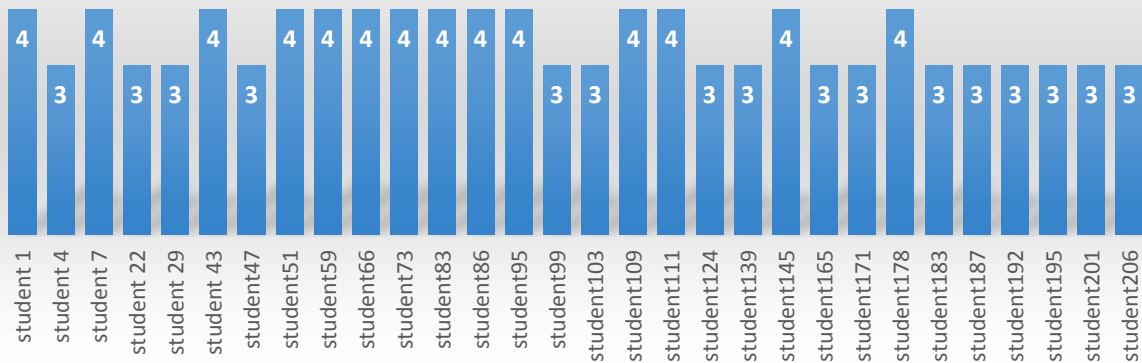
16. Teachers are able to identify your weaknesses and help you to overcome them.



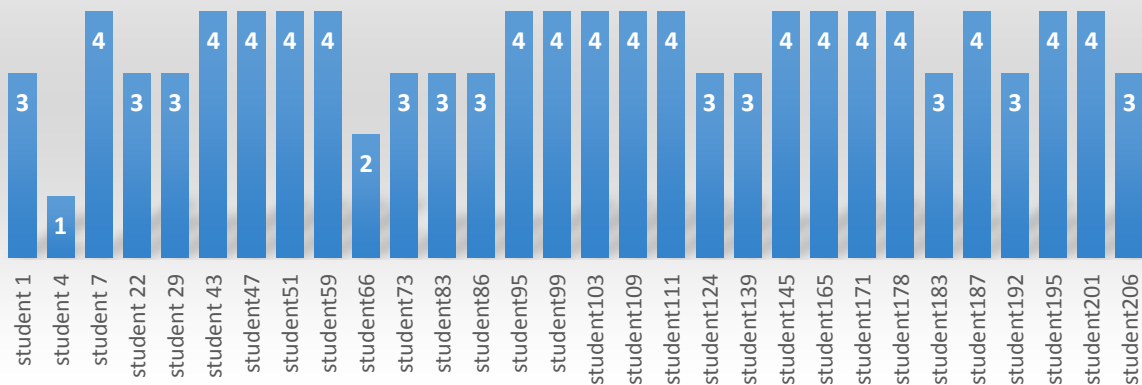
17. Was there any opportunity for personal interaction/Counseling with teachers?



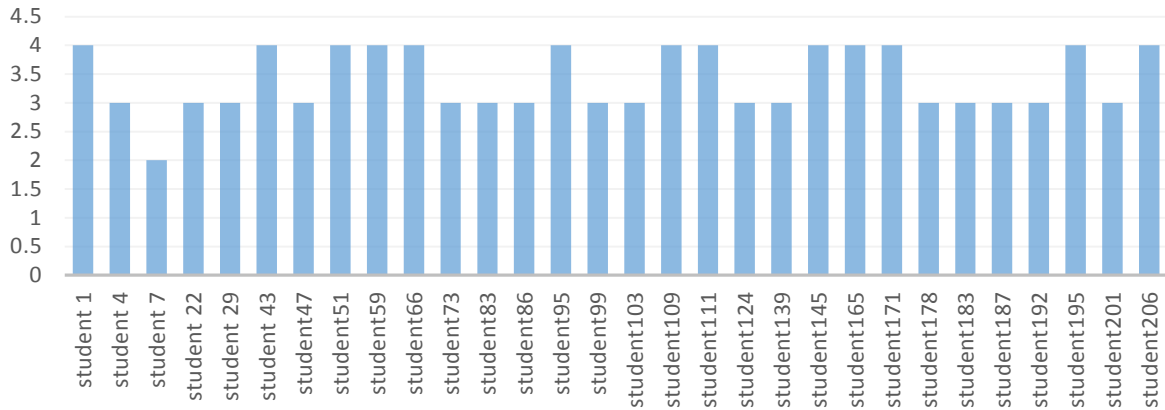
18. The institution makes effort to engage students in the monitoring, review and continuous



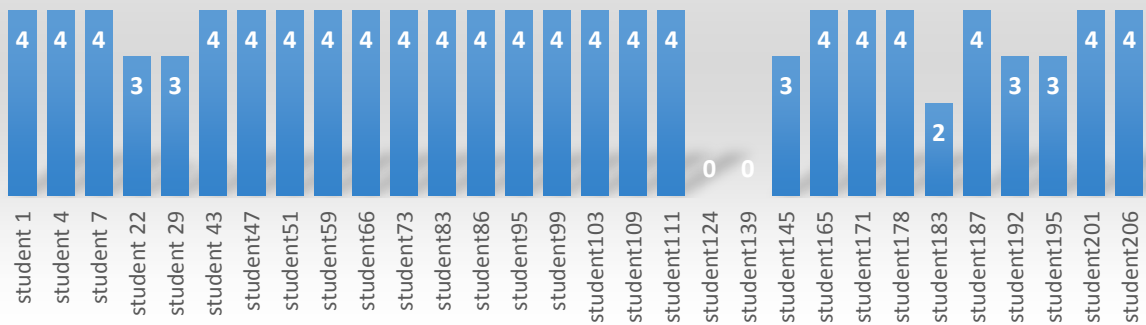
19. The institute/ teachers use student centric methods, such as experiential learning, participative learning and problem solving methodologies for enhancing learning experiences.



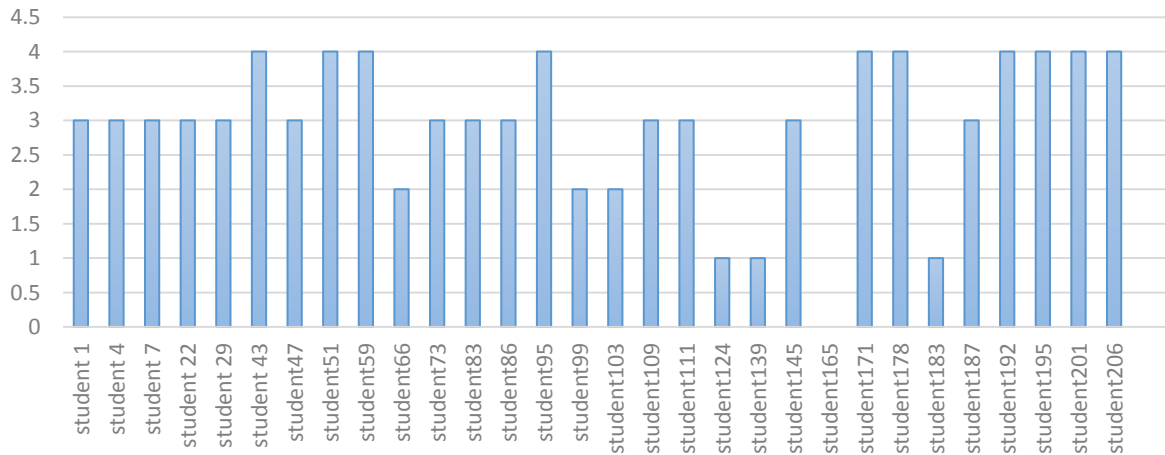
20. Teachers encourage you to participate in co-curricular/extracurricular activities.



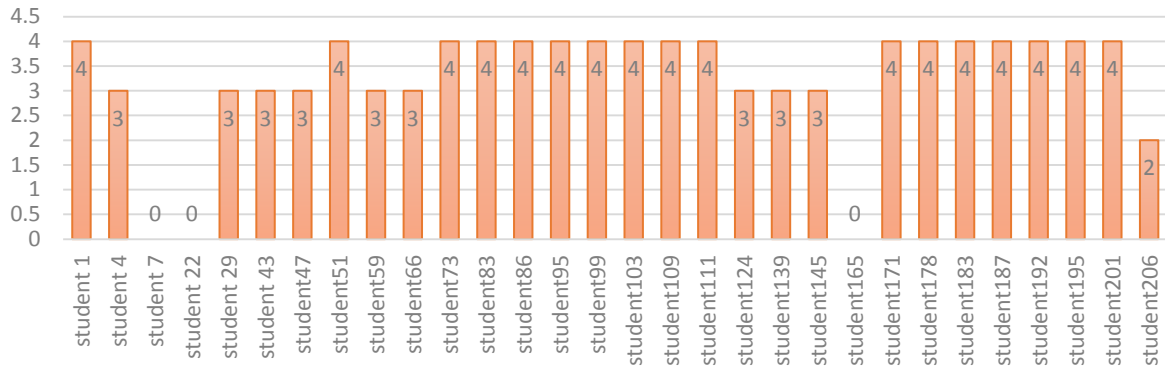
21. Efforts are made by the institute/ teachers to inculcate soft skills, life skills and employability skills to make you ready for the world of work.



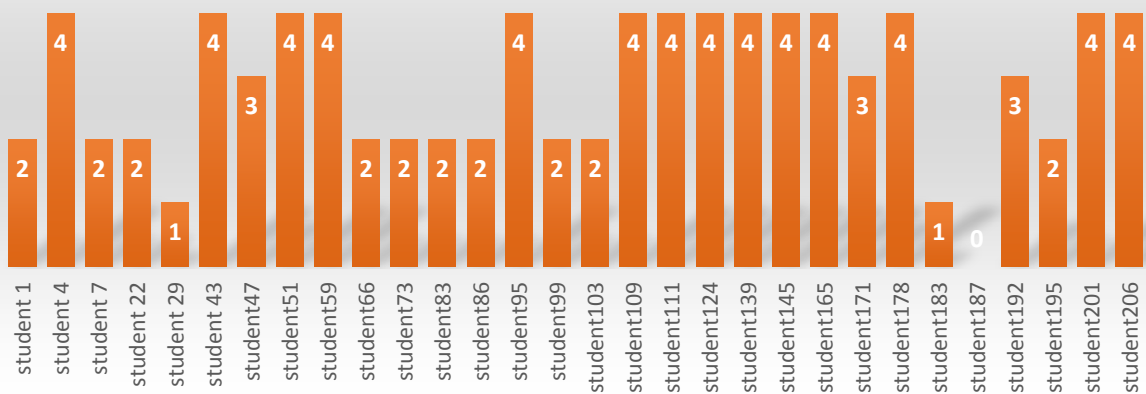
22. What percentage of teachers use ICT tools such as LCD projector, Multimedia, etc. while



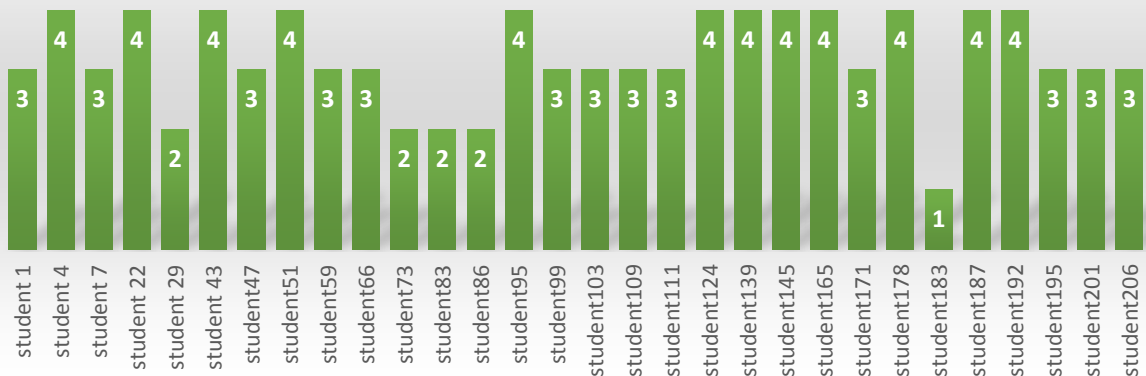
23. The overall quality of teaching-learning process in your institute is very good.



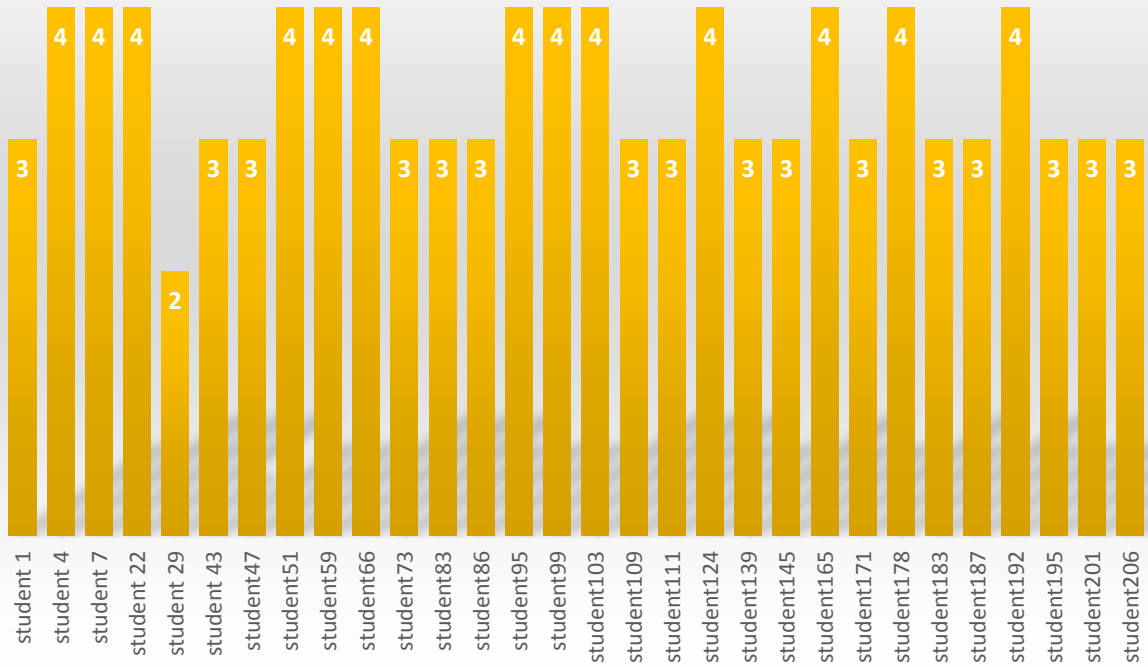
24. The institute takes active interest in promoting internship, student exchange, field visit opportunities for students.



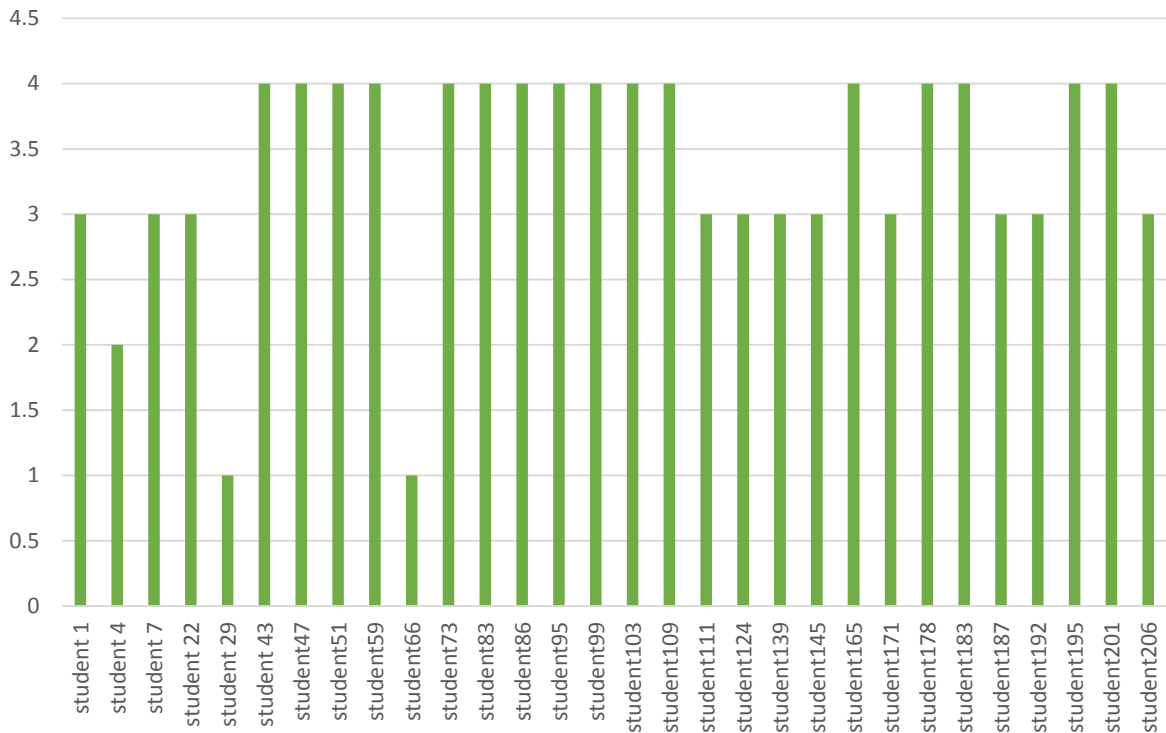
25. The teaching and mentoring process in your institution facilitates you in cognitive, social and emotional growth.



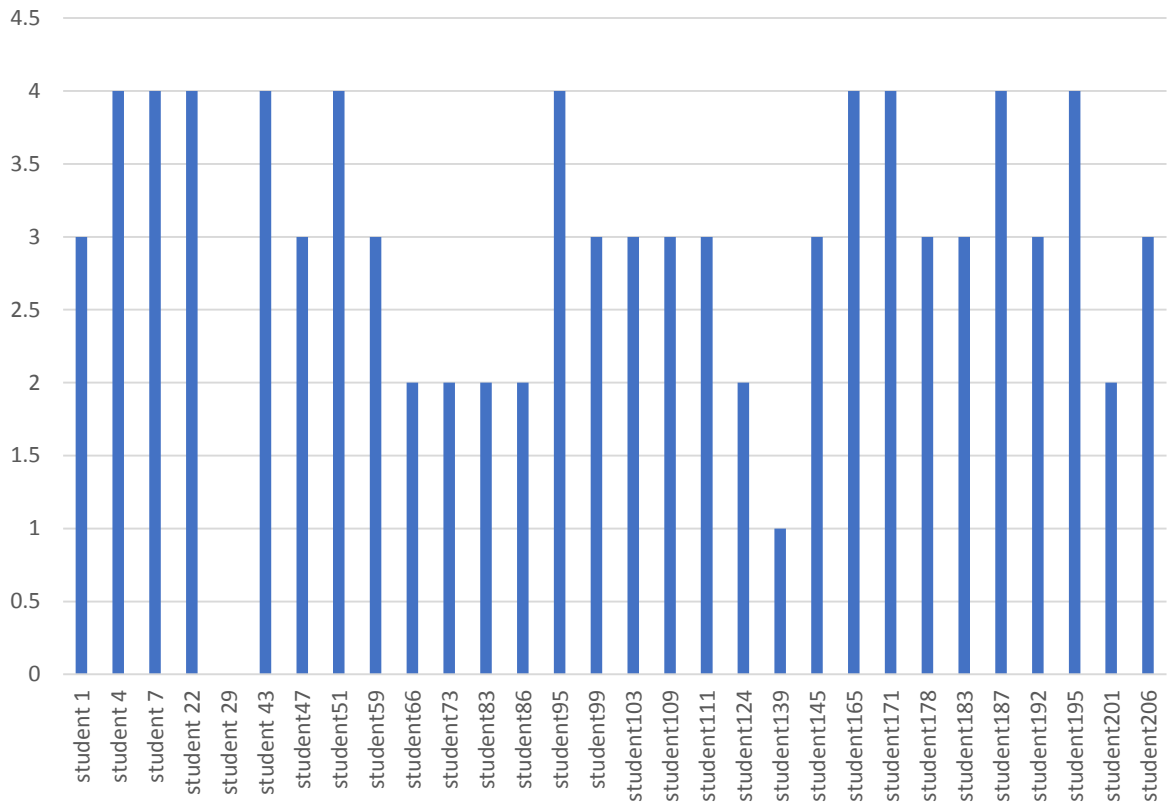
26. The institution provides multiple opportunities to learn and grow.



27. What is your opinion about the library materials for the course?



28. How is the campus of the college?



29. Do there occur any incidents of ragging in the college?

